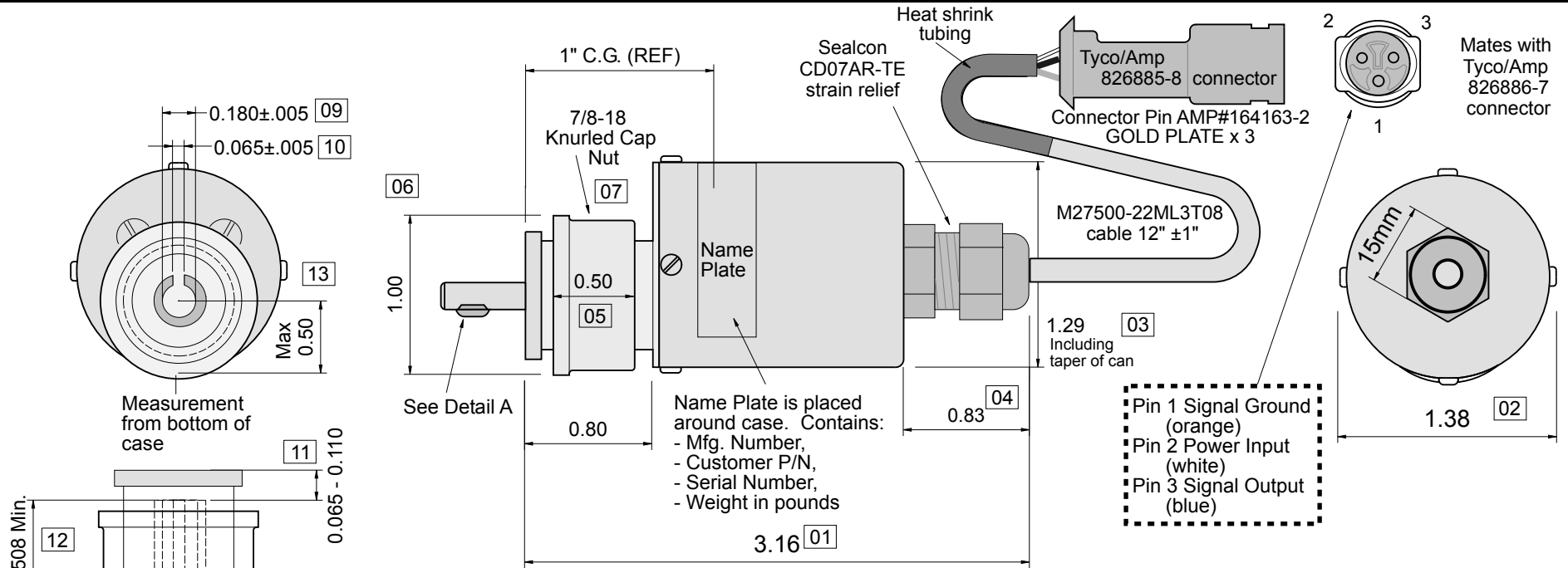


MATERIAL:

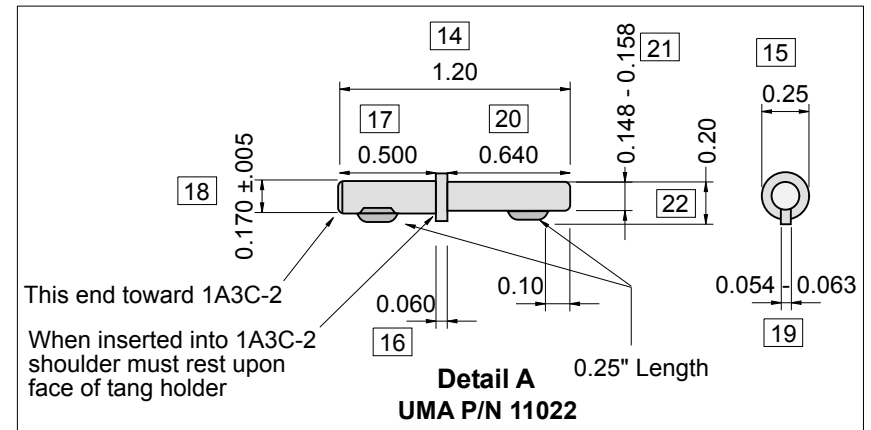


Detail showing measurement from mounting face to the top surface of tang holder

SPECIFICATIONS:

- 01. Input voltage (+VSS) range is 4.5 to 16 volts DC, CURRENT draw 10mA.
- 02. Output square wave 0 to +VSS, 4 pulses per tang revolution, Impedance is 2.7K ohm.
- 03. Unit is connected to the Mechanical Tachometer Drive port on engine.
- 04. Standard Tang, UMA PN: 11022, is used to adapt TSU to engine, others available.
- 05. Tang P/N 11022 will shear at a maximum of 35 In. Lbs. of torque.
- 06. Less than 5 In. lbs. of torque required to maintain tang speed up to 2000 RPM
- 07. Oil impregnated, self lubricating, wear resistant sleeve bearing.
- 08. Rotation CW or CCW
- 09. Signal Ground not connected to case.
- 10. Printed circuit board is conformal coated (MIL-1-46058C Type SR or equivalent).
- 11. Weight is 0.2 pounds.

NOTE: Wire to circuit board connections and sensor leads to be coated with RTV Silicone.



Specification Drawing

UMA Cage # 61225

						TOLERANCES EXCEPT AS NOTED		UMA Inc, 260 Main St. Dayton, VA 22821					
						.XX ±0.03		SCALE 1:1		DATE: 11/02/06		SHEET 1 of 1	
						.XXX ±0.01		SUPPLIER COMPLETE <input type="checkbox"/>		DRAW BY JM			
						Measurement in Inches		DESCRIPTION TACHOMETER SENDING UNIT					
						ANGULAR ±1°		APP		PART# 1A3C-2		REV IR	
ECO	REV	DESCRIPTION	DR	DATE	APP								