

Mounting Information

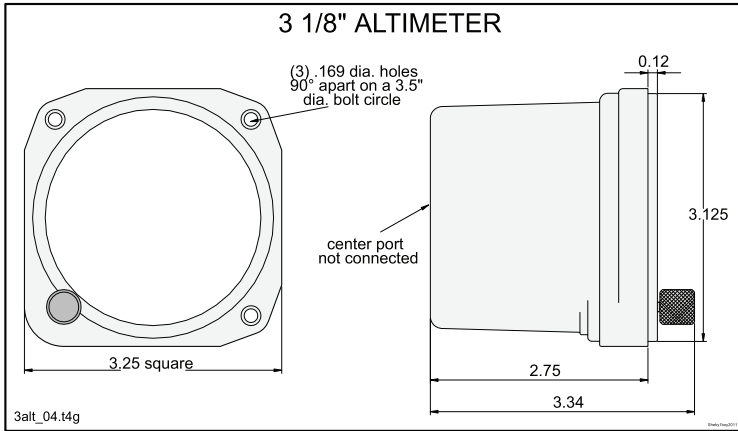


FIGURE #7: 3 1/8" ALTIMETER

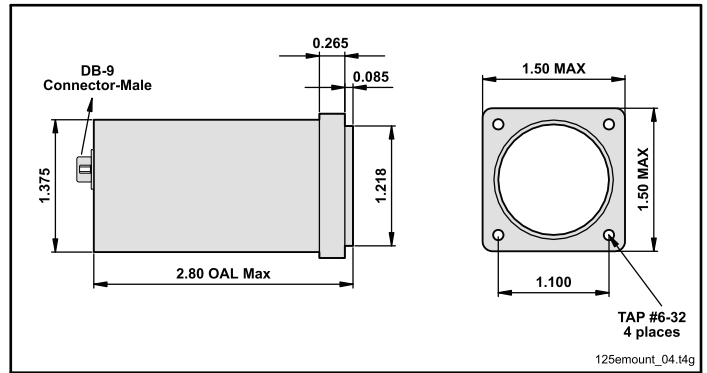


FIGURE #8: 1 1/4" ELECTRONIC GAUGE & 1 1/4" MECHANICAL GAUGE With INTERNAL LIGHTING

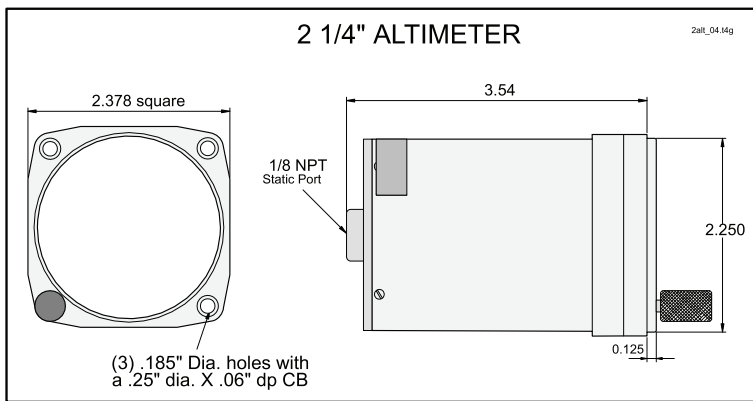


FIGURE #9: 2 1/4" ALTIMETER

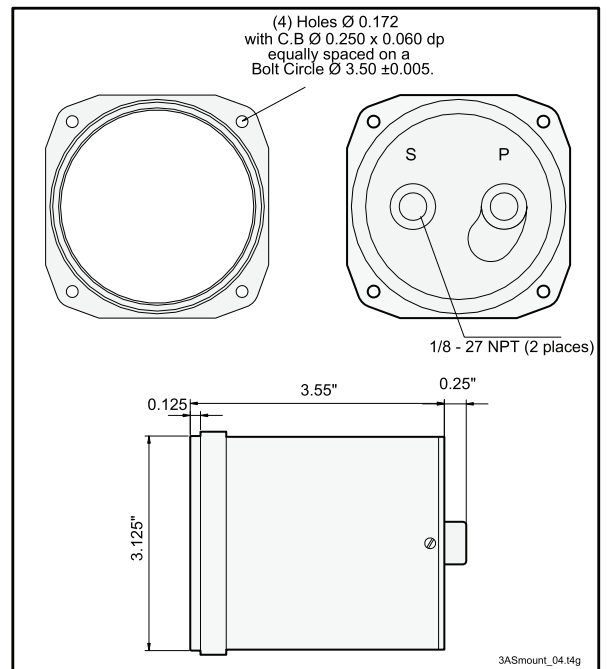


FIGURE #11: 3 1/8" TSO'D/NON-TSO'D AIRSPEED IND.

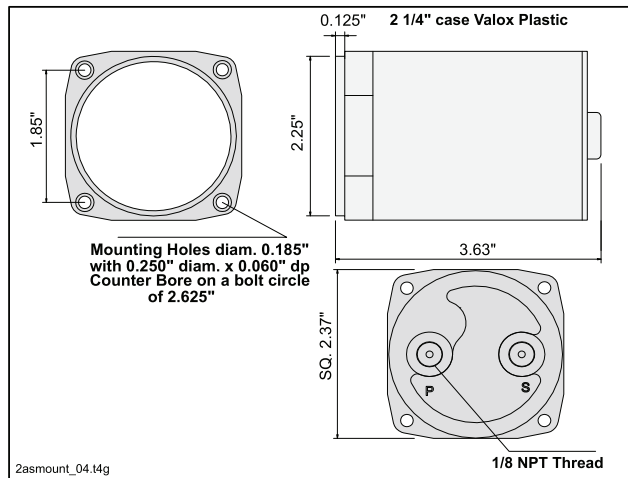


Figure #10 2 1/4" AIRSPEED INDICATOR

Mounting Information

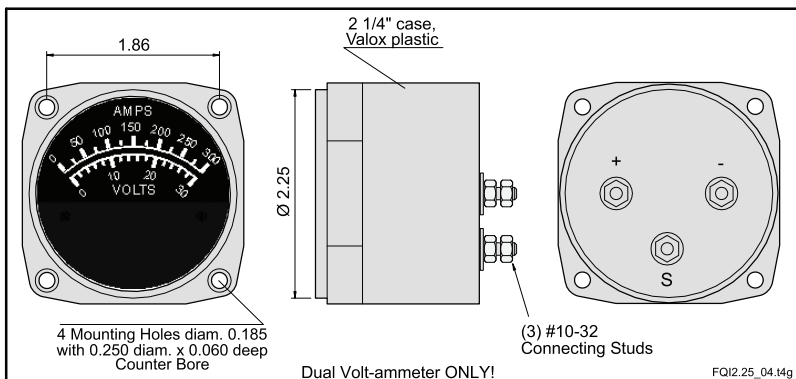


FIGURE #12: 2 1/4" ELECTRONIC (90° SWEEP)

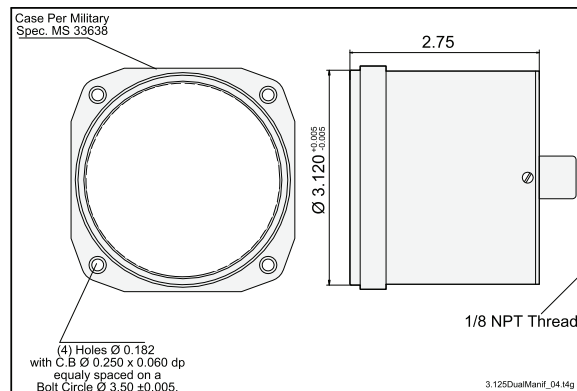


FIGURE #13: 3 1/8" MANIFOLD PRESSURE

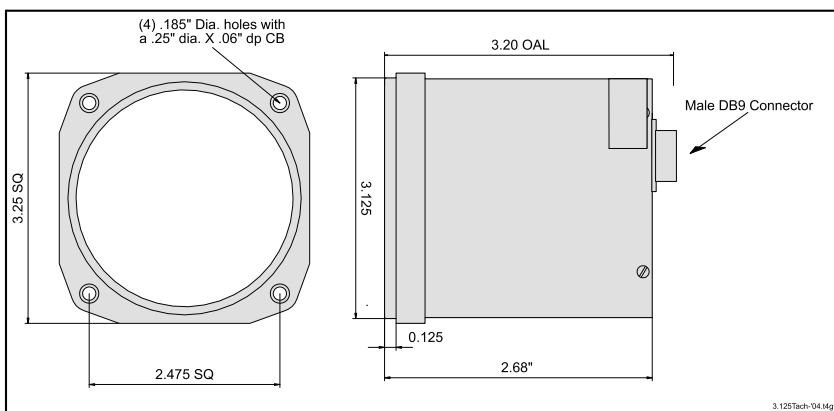


FIGURE #14: 3 1/8" TACHOMETER

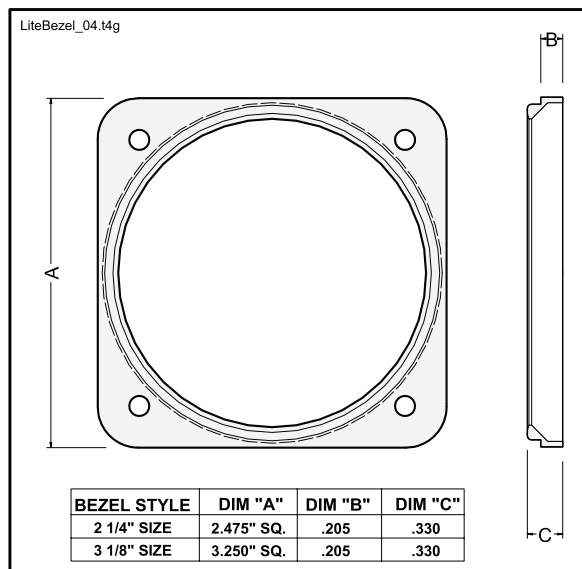


FIGURE #17: 2 1/4" & 3 1/8" LIGHT BEZELS

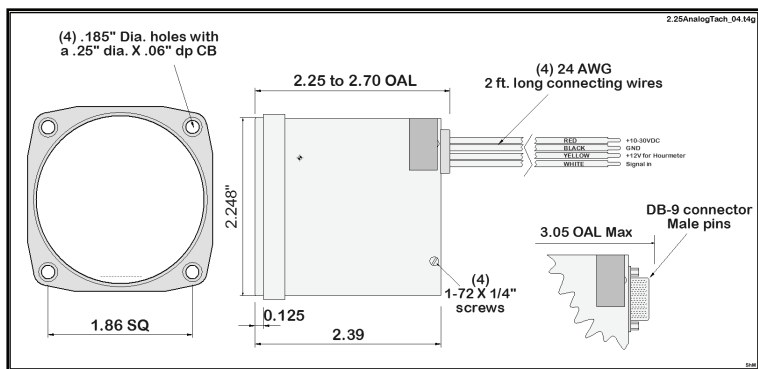


FIGURE #16: 2 1/4" TACHOMETER & 2 1/4" ELECTRONIC AIR-CORE/OPTI ALERT

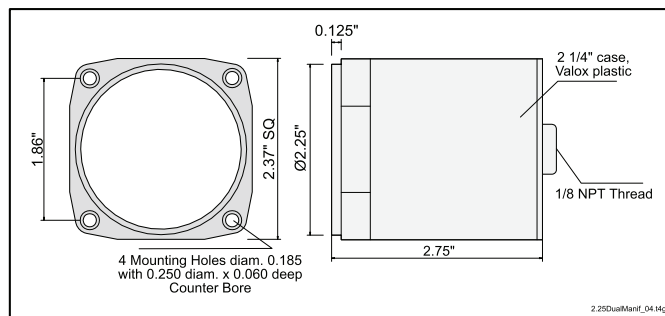


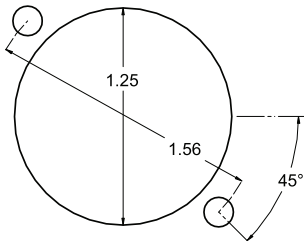
FIGURE #15: 2 1/4" MANIFOLD PRESSURE

FOR SPECIFIC GAUGE DIMENSIONS , PLEASE CONTACT UMA INC.

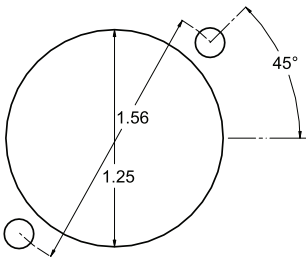
Panel Cut-Out Dimensions

Note: Drawings not to scale

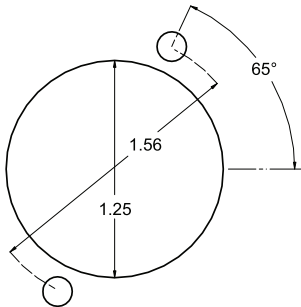
Panel Cut-out for
1 1/4" Mechanical Instrument
Type A



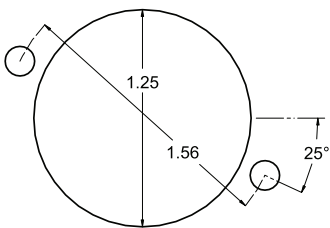
Panel Cut-out for
1 1/4" Mechanical Instrument
Type B



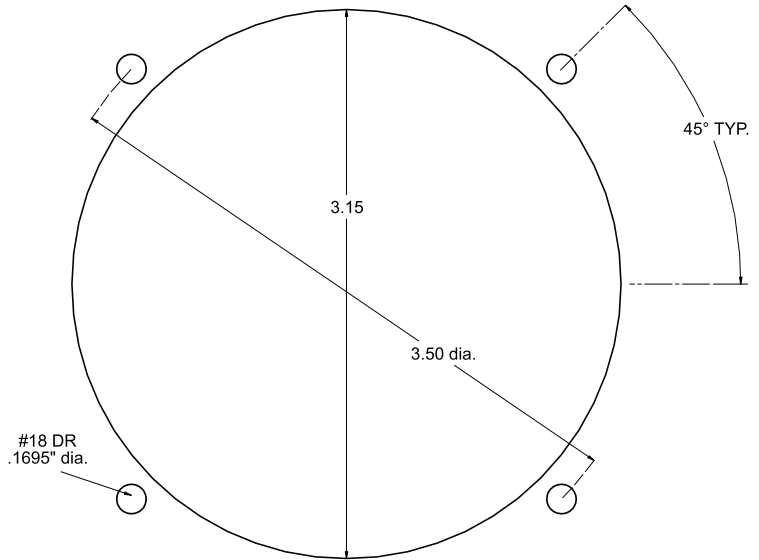
Panel Cut-out for
1 1/4" Mechanical Instrument
Type C



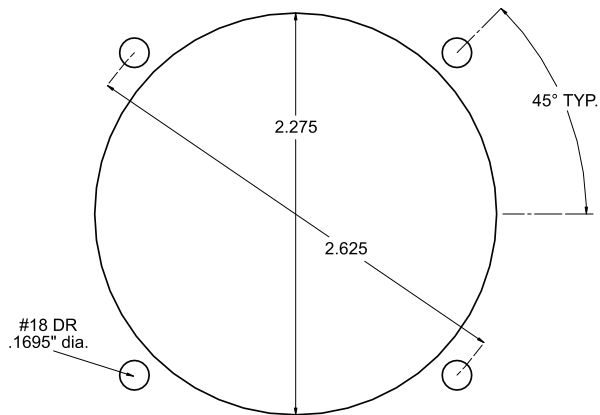
Panel Cut-out for
1 1/4" Mechanical Instrument
Type D



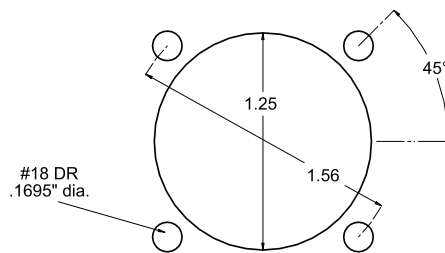
Panel Cut-out for typical 3 1/8" Instrument



Panel Cut-out for typical 2 1/4" Instrument



Panel Cut-out for
1 1/4" Electronic Instrument



cutouts_04.t4g