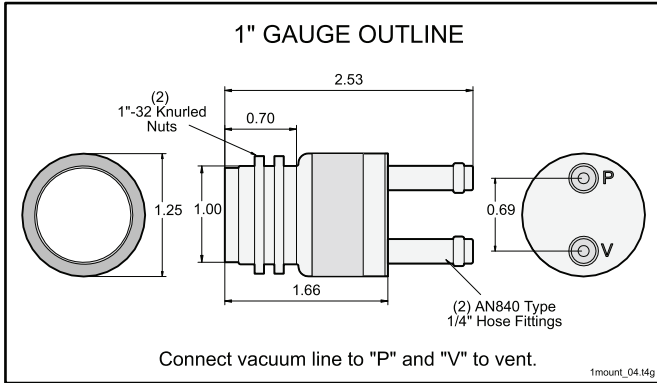
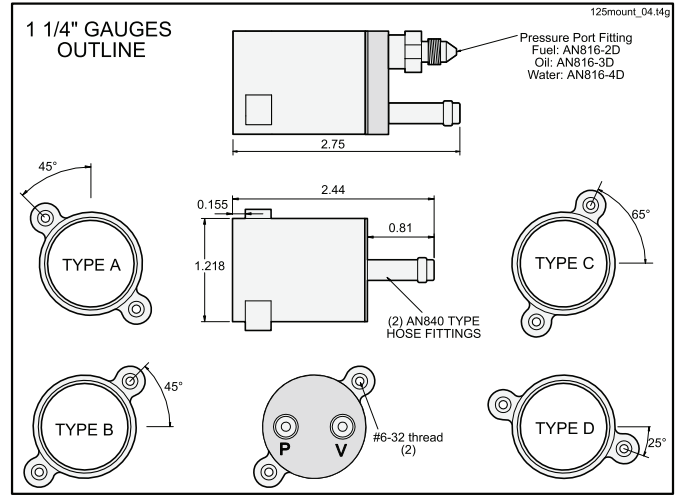


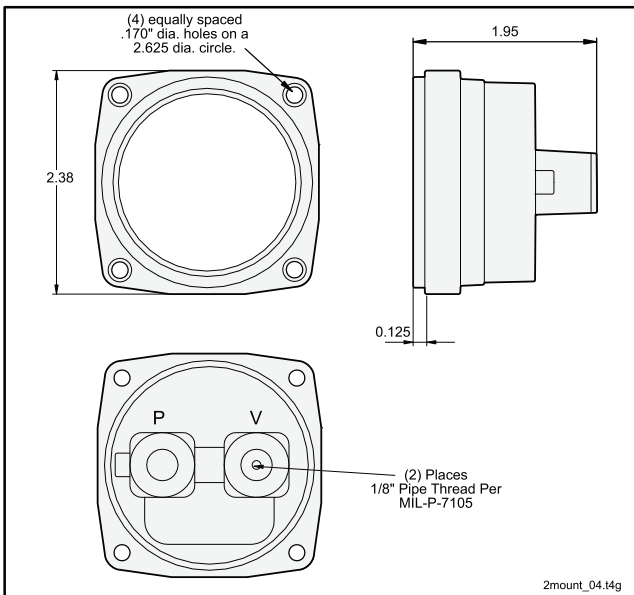
# Mounting Information



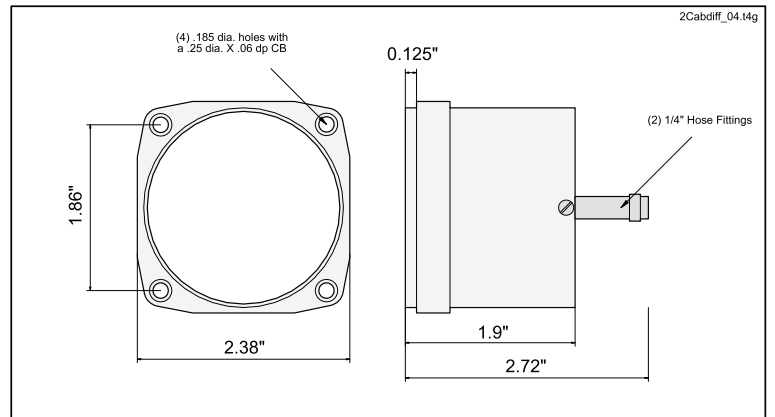
**FIGURE #1: 1" GAUGE**



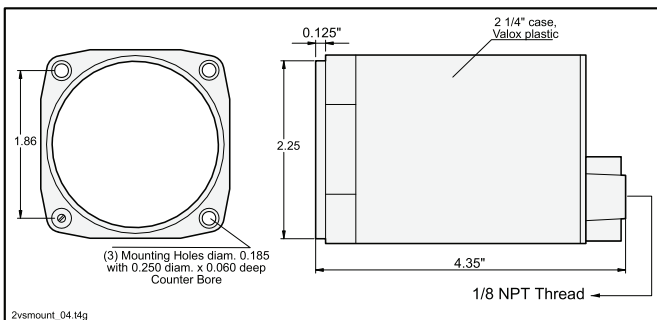
**FIGURE #2: 1 1/4" MECHANICAL GAUGE**



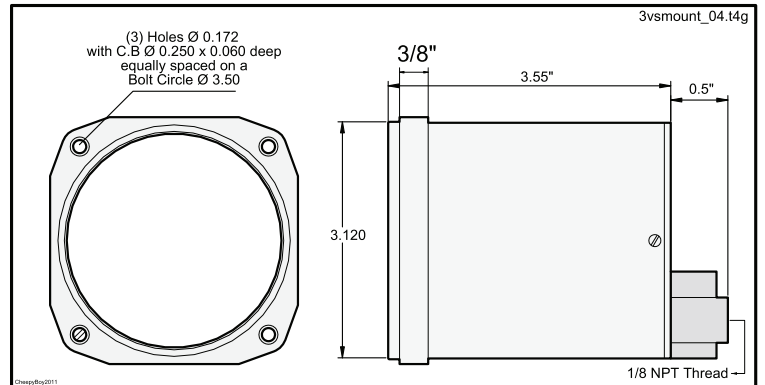
**FIGURE #3: 2 1/4" MECHANICAL SUCTION/PRESSURE**



**FIGURE #4: 2 1/4" CABIN ALT./DIFF.PRESSURE**



**FIGURE #5: 2 1/4" VERTICAL SPEED INDICATOR**



**FIGURE #6: 3 1/8" VERTICAL SPEED INDICATOR**

# Mounting Information

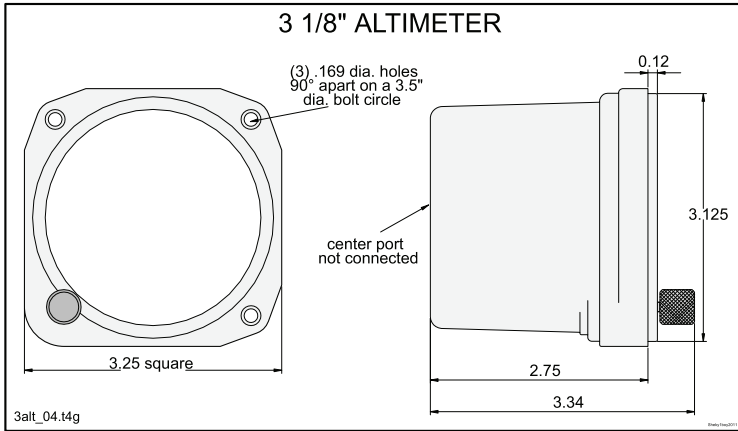


FIGURE #7: 3 1/8" ALTIMETER

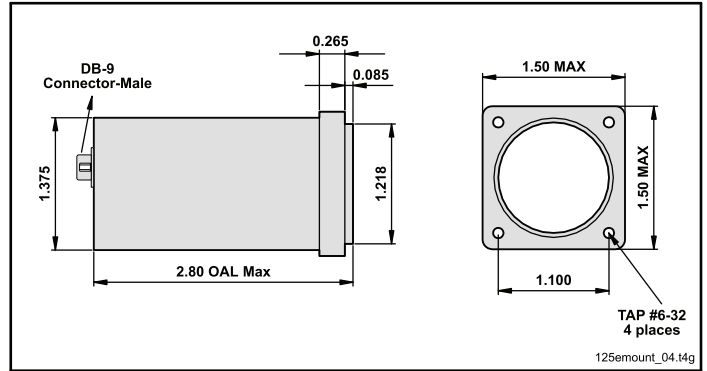


FIGURE #8: 1 1/4" ELECTRONIC GAUGE & 1 1/4" MECHANICAL GAUGE With INTERNAL LIGHTING

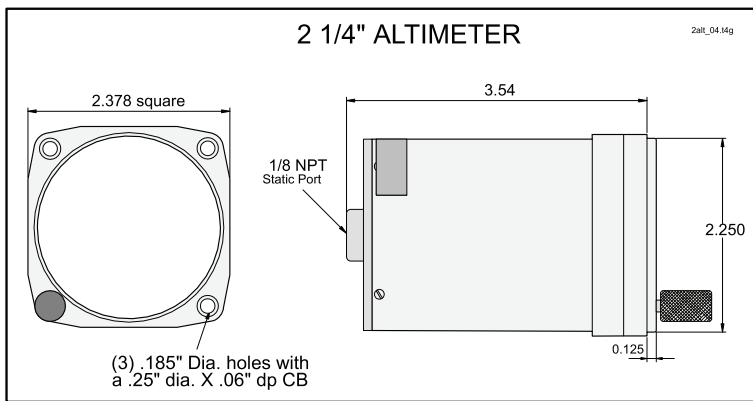


FIGURE #9: 2 1/4" ALTIMETER

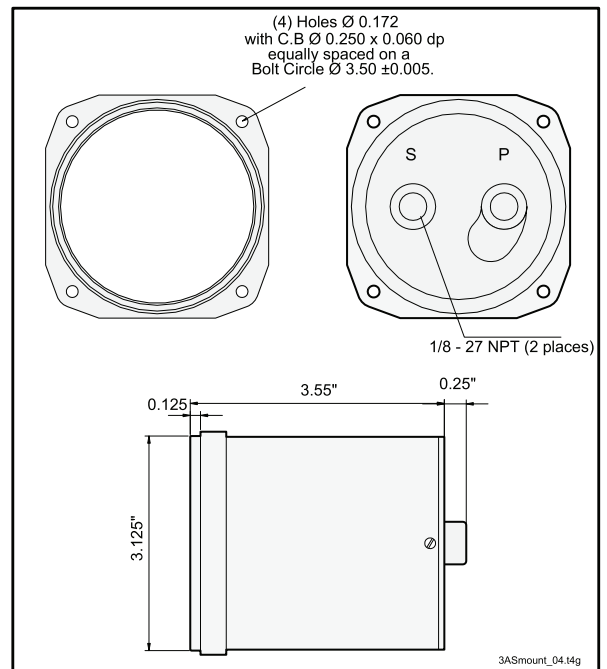


FIGURE #11: 3 1/8" TSO'D/NON-TSO'D AIRSPEED IND.

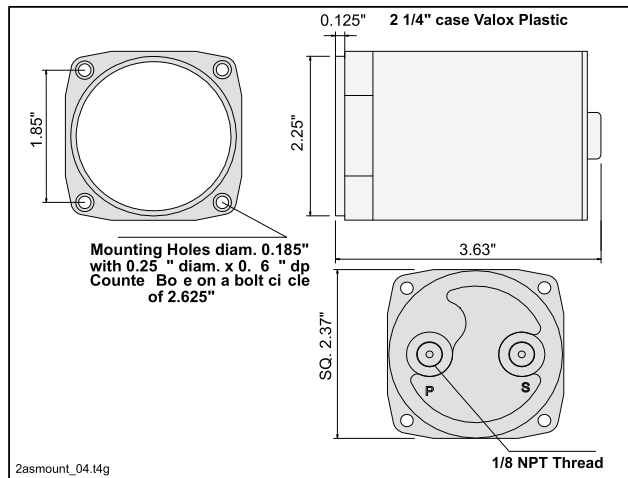
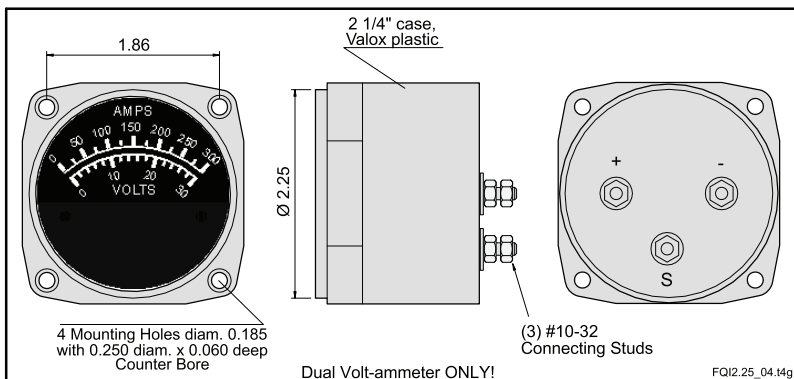
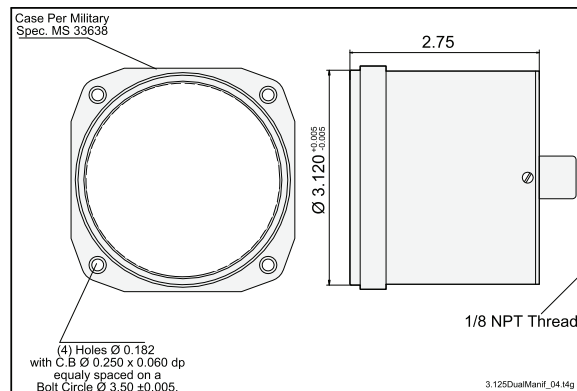


Figure #10 2 1/4" AIRSPEED INDICATOR

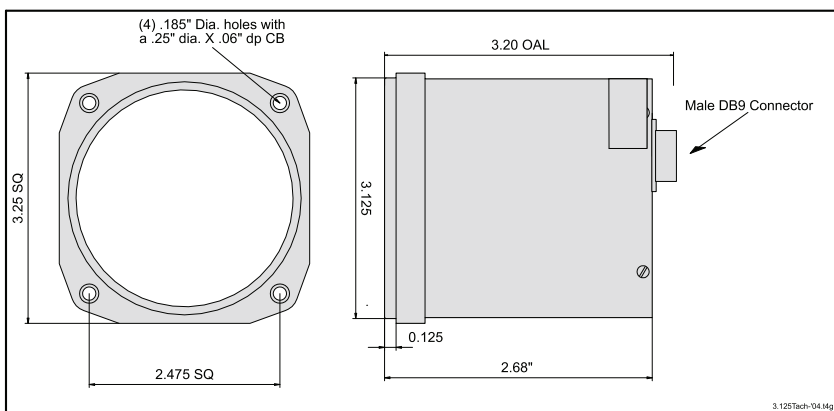
# Mounting Information



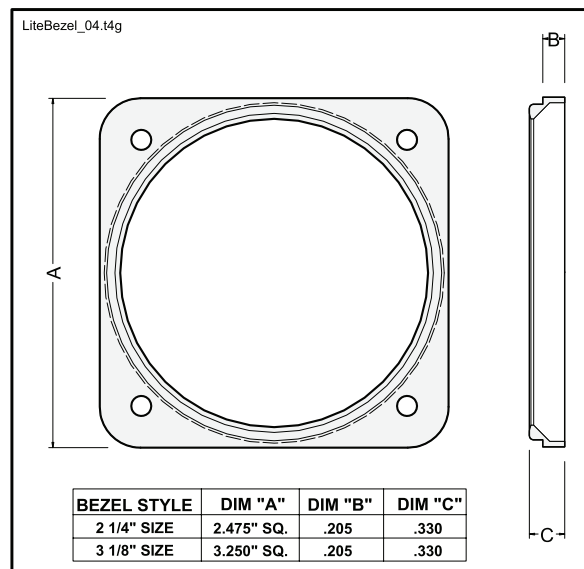
**FIGURE #12: 2 1/4" ELECTRONIC (90° SWEEP)**



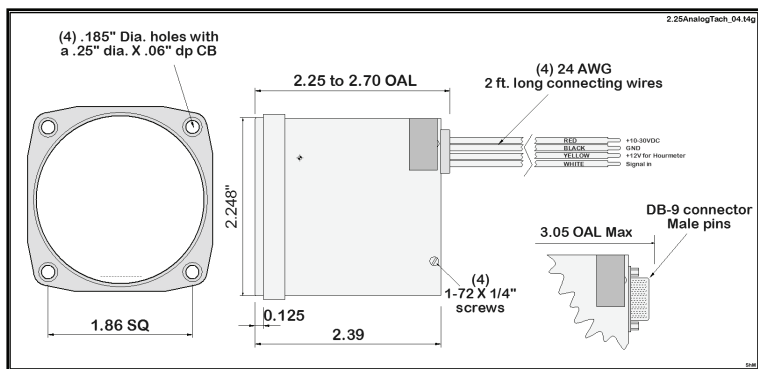
**FIGURE #13: 3 1" MANIFOLD PRESSURE**



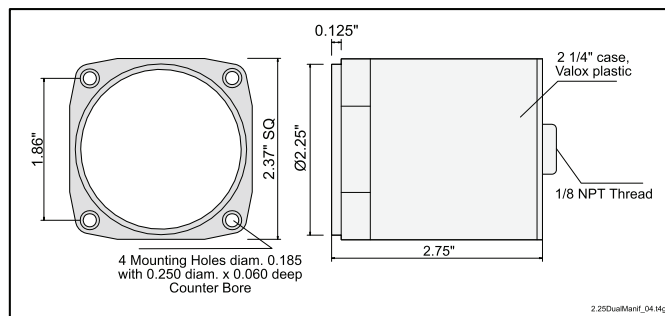
**FIGURE #14: 3 1/8" TACHOMETER**



**FIGURE #17: 2 1/4" & 3 1/8" LIGHT BEZELS**



**FIGURE #16: 2 1/4" TACHOMETER & 2 1/4" ELECTRONIC AIR-CORE/OPTI ALERT**



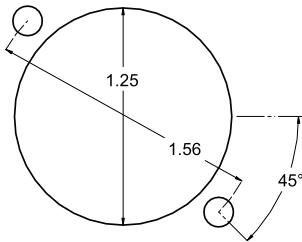
**FIGURE #15: 2 1/4" MANIFOLD PRESSURE**

FOR SPECIFIC GAUGE DIMENSIONS , PLEASE CONTACT UMA INC.

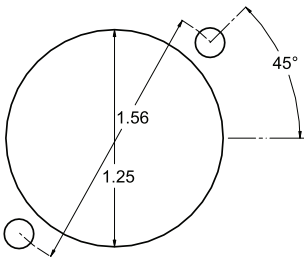
# Panel Cut-Out Dimensions

Note: Drawings not to scale

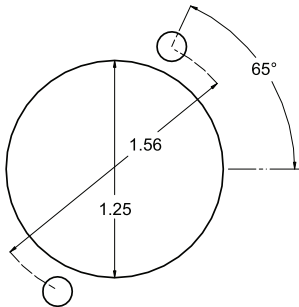
Panel Cut-out for  
1 1/4" Mechanical Instrument  
Type A



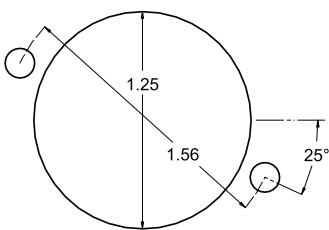
Panel Cut-out for  
1 1/4" Mechanical Instrument  
Type B



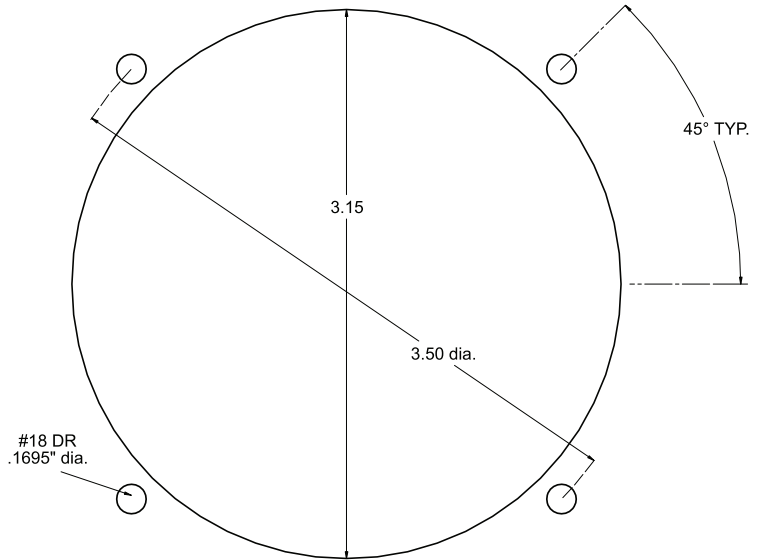
Panel Cut-out for  
1 1/4" Mechanical Instrument  
Type C



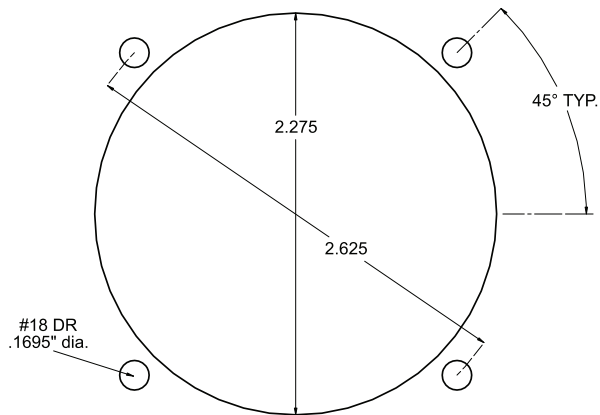
Panel Cut-out for  
1 1/4" Mechanical Instrument  
Type D



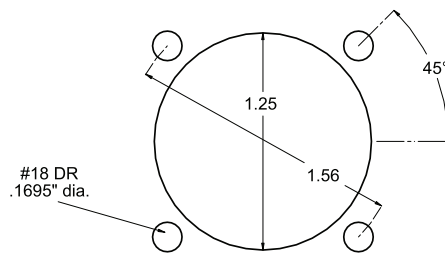
Panel Cut-out for typical 3 1/8" Instrument



Panel Cut-out for typical 2 1/4" Instrument



Panel Cut-out for  
1 1/4" Electronic Instrument



cutouts\_04.t4g